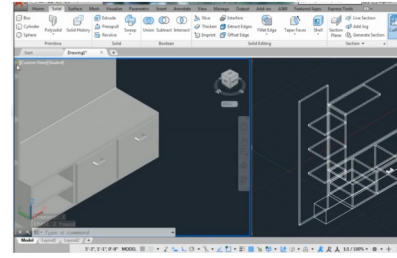


EGYPTIAN

Mohamed Dsooqi

Drafts.man



My Definition

Holds two certificates, qualification above average, with a good grade from a government institute

The five-year system, Department of Mechanical Engineering, 2010,
And a qualification above average, with a grade of very good, in a private institute
Academy of Modern Sciences - Department of Surveying General Division in 2017

CONTACT ME

+2-011-249-226-08

Born 8 | 4 | 1229

mohdsooki@gmail.com

Website:
<https://www.instagram.com/pondo0k/>

Egypt

Al Jazeera District - Beni Suef
Shubra, el sahell-Saint Teresa

CERTIFICATES

Holds a degree in human development
| 1000 coaches | From Cit . Center

Holds a degree in Total Station from Beni Suef
University

LANGUAGES SPOKEN

" Arabia
Mother tongue

" English Language 2
Speaking, writing and
comprehension 65%

SKILLS

Auto CAD

Microsoft Office

Solid Works

professional goals

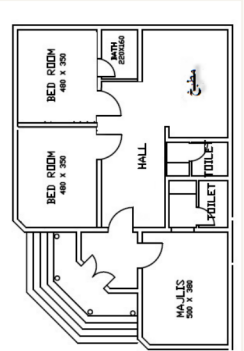
Good planning with appropriate efficiency and implementation with simple achievement of high quality desirable in order to enable stability, development, professional creativity, practical and scientific advancement
I always wish success
So I want a new challenge

work experien

Draftsman

Training on YouTube 2020 | Until now

Tasks: Aluminum and wood works in which high-quality kitchen models are drawn
Designs Mechanical works such as the design of nerves, meaning pipes and cylinders, that is, steam boilers in all their forms, as well as engineering drawings, as well as electrical works, designs of lamps and electrical boxes, as well as plastic and glass works, and others.



I worked

Draftsman Land Escape

Salmaniya for Civilized Investment 2020 | 2020

Responsibility in Land Escape

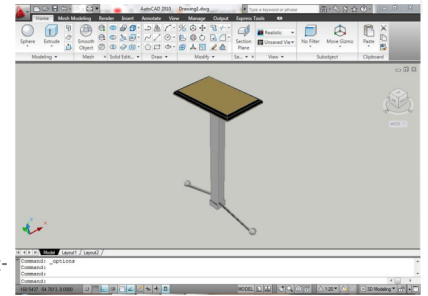
Works closely with the Civil Eng

I worked

surveyor & Roadway Draftsman

Al Fadl General Contracting 2017 | 2018

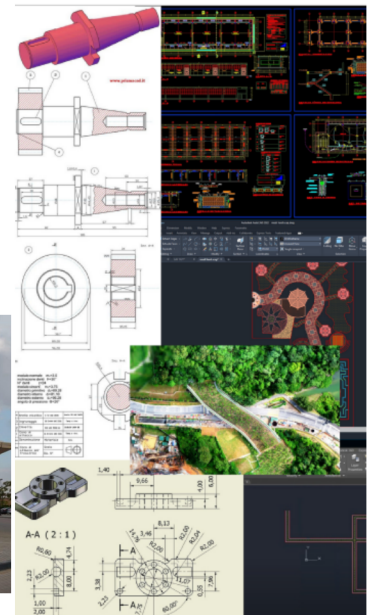
Responsibility in raising, signing and directing surveying equipment,
Base map development- Marking and signage- Dimensions- Grading- Parking-
Setting-out with civil 3D
- Works closely with the Civil Eng



Roadway Draftsman

Al Fadl General Contracting 2017 | 2017

Responsibility in raising, signing and directing surveying equipment, drawing
with coordinates, advice on modifications, and others.
- Works closely with the Civil Eng



These models worked on

